

SIU Carbondale Department of Public Safety

2019 ANNUAL REPORT



Benjamin Newman
Director of Public Safety,
Chief of Police

Law Enforcement Code of Ethics

As a Law Enforcement Officer, my fundamental duty is to serve mankind; to safeguard lives and property; to protect the innocent against deception, the weak against oppression or intimidation, and the peaceful against violence or disorder, and to respect the Constitutional rights of all men to liberty, equality and justice. I will keep my private life unsullied as an example to all; maintain courageous calm in the face of danger, scorn, or ridicule; develop self-restraint; and be constantly mindful of the welfare of others. Honest in thought and deed in both my personal and official life, I will be exemplary in obeying the laws of the land and the regulations of my department. Whatever I see or hear of a confidential nature or that is confided to me in my official capacity will be kept ever secret unless revelation is necessary in the performance of my duty. I will never act officiously or permit personal feeling, prejudices, animosities or friendships to influence my decisions. With no compromise for crime and with relentless prosecution of criminals, I will enforce the law courteously and appropriately without fear or favor, malice or ill will, never employing unnecessary force or violence and never accepting gratuities. I recognize the badge of my office as a symbol of public faith and I accept it as a public trust to be held so long as I am true to the ethics of the police service. I will constantly strive to achieve the objectives and ideals, dedicating myself before God and to my chosen profession... law enforcement.

SIU Carbondale Department of Public Safety

2019 ANNUAL REPORT

Benjamin Newman
Director of Public Safety,
Chief of Police

CONTENTS

MESSAGE FROM THE CHIEF.....	1
AUTHORITY.....	2
MISSION, VISION, VALUES.....	3
STORM READY ACCREDITATION.....	4
GOALS AND PROGRESS FOR 2020.....	5
DEPARTMENT OF PUBLIC SAFETY STRUCTURE.....	8
SAFETY ON CAMPUS.....	15
MEET THE DEPARTMENT OF PUBLIC SAFETY.....	18
TRAINING AND CAPABILITIES.....	19
CLERY ACT ACTIVITIES.....	23
UNIFORM CRIME REPORT SUMMARY.....	24
2019 INTERNAL AFFAIRS REPORT.....	31
FY 2019 EXPENDITURES.....	32
COMMUNITY INVOLVEMENT.....	33
2019 EMPLOYEE AWARDS.....	35
GOALS FOR 2020.....	37

CHIEF OF POLICE BENJAMIN NEWMAN
DEPARTMENT OF PUBLIC SAFETY
SIU CARBONDALE



MESSAGE FROM THE CHIEF

Southern Illinois University Carbondale is an internationally recognized, doctoral research granting institution. The picturesque campus provides a mixture of urban and rural settings. There are hundreds of good people that work diligently to support the Mission of the university. Personnel embrace the team environment.

Department of Public Safety police, parking, and dispatch personnel operated with professionalism, integrity, honor and dedication to accomplish agency and university objectives. The year 2019 was a banner year for community engagement. Staff provided safety information to our campus at a record pace. In addition, incidents of “crimes against persons,” property crimes, and “crimes against society” all declined from previous years.

In an effort to respond to the rise in mental health related police calls for service nationally, the department adopted the International Association of Chiefs of Police One Mind Campaign strategies. “The One Mind Campaign, an IACP effort, seeks to ensure successful interactions between police officers and persons affected by mental illness. The initiative focuses on uniting local communities, public safety organizations, and mental health organizations so that the three become ‘of one mind.’” The department also utilized a Mental Health Task Force to monitor outreach efforts.

With the purpose of assessing vulnerabilities to weather events and responding accordingly, personnel developed strategies to prepare our community. In conjunction with key stakeholders, we moved forward with application for the National Weather Service “StormReady” Campus designation. The process required the university to install additional equipment and fine-tune processes. Through partnerships, the university became a “StormReady” campus.

With persistence, Department of Public Safety worked provided comprehensive public safety services to the campus community. Personnel conducted extensive outreach and are genuinely concerned about the success of our student populace and our university. We are all focused in on providing an environment conducive to learning.

Respectfully submitted,

A handwritten signature in black ink, appearing to read "Benjamin Newman".

Benjamin Newman
Director of Public Safety, Chief of Police

AUTHORITY

The authority of the Southern Illinois University Department of Public Safety comes from the U.S. Constitution, the Illinois Constitution and Illinois statutes. The three documents define the scope and limits of law enforcement authority as it pertains to the enforcement of laws, statutes, ordinances and arrests. The Board of Trustees of the university was given authority to employ police officers under Illinois Statute 110 ILCS 520/8. All employees employed by the SIU Department of Public Safety meet the standards established for police officers by the Illinois Law Enforcement Standards Board.

Members of the SIU Police Department are conservators of the peace; as such, they have all powers possessed by policemen in cities and counties, including the power to make arrests on view or warrants of violations of state statutes, university rules and regulations, and city or county ordinances. They may exercise such powers only within counties wherein the university and any of its branches or properties are located when such is required for the protection of university properties and interests, and its students and personnel, and otherwise, within such counties, when requested by appropriate state or local law enforcement officials.

While on duty, SIU Police authority and responsibilities come from Illinois Statutes 725 ILCS 5/107-2 and 110 ILCS 520/8, which gives SIU police officers full arrest authority. SIU police officers are given authority to make an arrest when: (1) the law enforcement officer has a warrant commanding that such a person be arrested; or (2) the law enforcement officer believes, on reasonable grounds, that a warrant for the person's arrest has been issued in this state; or (3) the law enforcement officer believes, on reasonable grounds, that a felony warrant has been issued in this state; or (4) there are reasonable grounds to believe that the person is committing or has committed a crime.

Southern Illinois University Carbondale includes properties in and around the city of Carbondale, the county of Jackson, the county of Williamson and the state of Illinois. The SIU Department of Public Safety's jurisdiction includes all property owned or controlled by the university, as well as streets adjacent to, and running through, the university campus. The department has entered into a formal mutual aid agreement with the Carbondale Police Department and the Jackson County Sheriff's Department as part of the Police Routine Assistance Agreement.

SIU Police Officers work with the Carbondale Police Department, the Jackson County Sheriff's Office, the Williamson County Sheriff's Office, state and federal law enforcement agencies, and all appropriate agencies of the criminal justice system. These agencies routinely exchange crime-related reports and statistics and conduct cooperative patrols, special events, investigations, and special unit operations.



MISSION

The Southern Illinois University Carbondale Department of Public Safety is a Community Policing and Problem Solving Agency that provides comprehensive public safety services for a nationally ranked higher education institution. Personnel establish and maintain trust-based relationships with university faculty, students, staff and the broader community. Department personnel foster partnerships with the community and other law enforcement agencies. Personnel focus on preventing crime and improving quality of life.

Department of Public Safety employees are responsive to community needs. Police officers, telecommunicators, parking agents, and administrative staff work to support and further the university's education and research mission. The organization is focused on protecting critical assets and preventing the disruption of university services. Personnel are prepared to respond to incidents ranging from routine to disastrous.

Law enforcement officers are sworn to uphold the constitutions of the United States and Illinois. All personnel are ethically responsible for preserving individual freedoms and promoting an environment conducive to creativity and innovation.

VISION

The Southern Illinois University Carbondale Department of Public Safety is committed to providing preemptive public safety services to the university and the surrounding region. Personnel offer expert leadership in emergency response, threat assessment and the tactical delivery of law enforcement services.

The department promotes problem solving efforts to address a wide range of community concerns. Public Safety personnel are well-trained and adequately equipped to carry out protection-related responsibilities. The community is core to the development and implementation of crime reduction strategies. The department will work collaboratively, seeking input from individuals and organizations to establish a foundation for problem solving.

The Department of Public Safety seeks to strengthen accountability through the achievement of accepted law enforcement standards. The agency is dedicated to developing a culture conducive to learning, innovation and advancement of the law enforcement profession. The agency must remain agile to efficiently police in an ever-changing society.

VALUES

PROFESSIONALISM

Agency personnel are to act with moral character and exemplify law enforcement standards of personal conduct.

INTEGRITY

All employees are to abide by an unimpaired code of conduct, adhering to the values of the organization. All staff balance kindness, compassion, and courteousness with accountability.

HONOR

Police officers, telecommunicators, parking agents and administrative staff are to operate with the responsibility and dignity of holding a position of public trust. Personnel are to act with respect and commitment befitting public safety employees.

DEDICATION

Agency employees are committed to providing consistent, unbiased services. Personnel are to operate with unwavering reliability and attentiveness.

STORM READY ACCREDITATION

In April 2019, Southern Illinois University Carbondale may have very well become one of the safest places to be in the region should severe weather strike. As it is was recognized by the National Weather Service as ‘StormReady.’

There are only about three dozen organizations that have met the criteria for this. Southern Illinois University Carbondale is only the second university to receive it.

This accreditation was achieved by meeting some very specific criteria for getting warnings and getting those warnings to everyone on campus.



Meaning that Southern Illinois University Carbondale administrators with assistance from Department of Public Safety developed plans and procedures should severe weather strike. They have systems in place to send alerts to people on campus through a multitude of platforms like social media, text, and email.

On top of new procedures the University has installed 8 multipurpose sirens on campus that can be used to warn people about all sorts of threats - not just severe weather.

DEPARTMENT OF PUBLIC SAFETY GOALS

Each year, the Department formulates and updates agency goals on an annual basis. Goal work may occur in tandem with strategic planning efforts, but also may be very individualistic. The goals relate to the immediate needs of the Department or the community and are established after careful study and consultation with individuals inside and outside the Department. Annual goals are used in order to hold agency leaders or those deemed to be involved accountable for objectives related to their functions. Attempts are made to accomplish or nearly accomplish these goals during the year.

GOALS AND PROGRESS FOR 2019

GOAL 1: *Promote organizational transparency.*

PROGRESS: *The Department of Public Safety thrives on sharing information within and external to the agency. On a routine basis, department personnel communicate with university personnel and members of the community. Agency personnel are leading or contributing members of the Traffic and Parking Committee, the Public Safety Advisory Board, the Cultural Respect Meeting, the One Mind Campaign and other groups designed to exchange information and to move university public safety efforts forward.*

GOAL 2: *Provide improvements to existing facilities.*

PROGRESS: *Improvements were made to the agency facility, including temporary holding, evidence, and locker rooms. The department sits underneath an active dining hall. Agency personnel work in coordination with University Housing on facility improvements.*

GOAL 3: *Extend community outreach efforts.*

PROGRESS: *The Department currently maintains three social media platforms (Facebook, Twitter, and Instagram) and manages five websites. The agency successfully produced an engagement video in partnership with SIU students. During 2019, department personnel conducted 787 presentations on crime prevention or safety related topics to members of the community.*

GOAL 4: *Exceed law enforcement standards.*

PROGRESS: *The Department of Public Safety continues to maintain accredited status. The Illinois Law Enforcement Accreditation Program, founded by the Illinois Association of Chiefs of Police, accredited the agency two years ago. In concert with the accredited status, the department opens its policy manual annually to key stakeholders for examination and critique.*

GOAL 5: *Provide leadership in Occupant Emergency Planning (OEP) and Continuity of Operation Planning (COOP) for critical facilities and operations on campus.*

PROGRESS: *Department personnel, in coordination with stakeholders across campus, completed five occupant emergency plans (OEP) for the following buildings: Student Center, Communications, Rainbow's End Daycare Center, Morris Library, and Lindegren Hall - School of Medicine. Department personnel are working on completing the remaining buildings within the School of Medicine, Touch of Nature, east and west housing, Faner Hall - Criminal Justice Department, and Student Health Services.*

GOAL 6: *Enhance mental health response training and protocols.*

PROGRESS: *Sworn personnel are trained in mental health awareness and response. Approximately twenty percent of sworn staff have received training in Crisis Intervention Team tactics. In addition, the department is focused on implementing the One Mind Campaign strategies.*

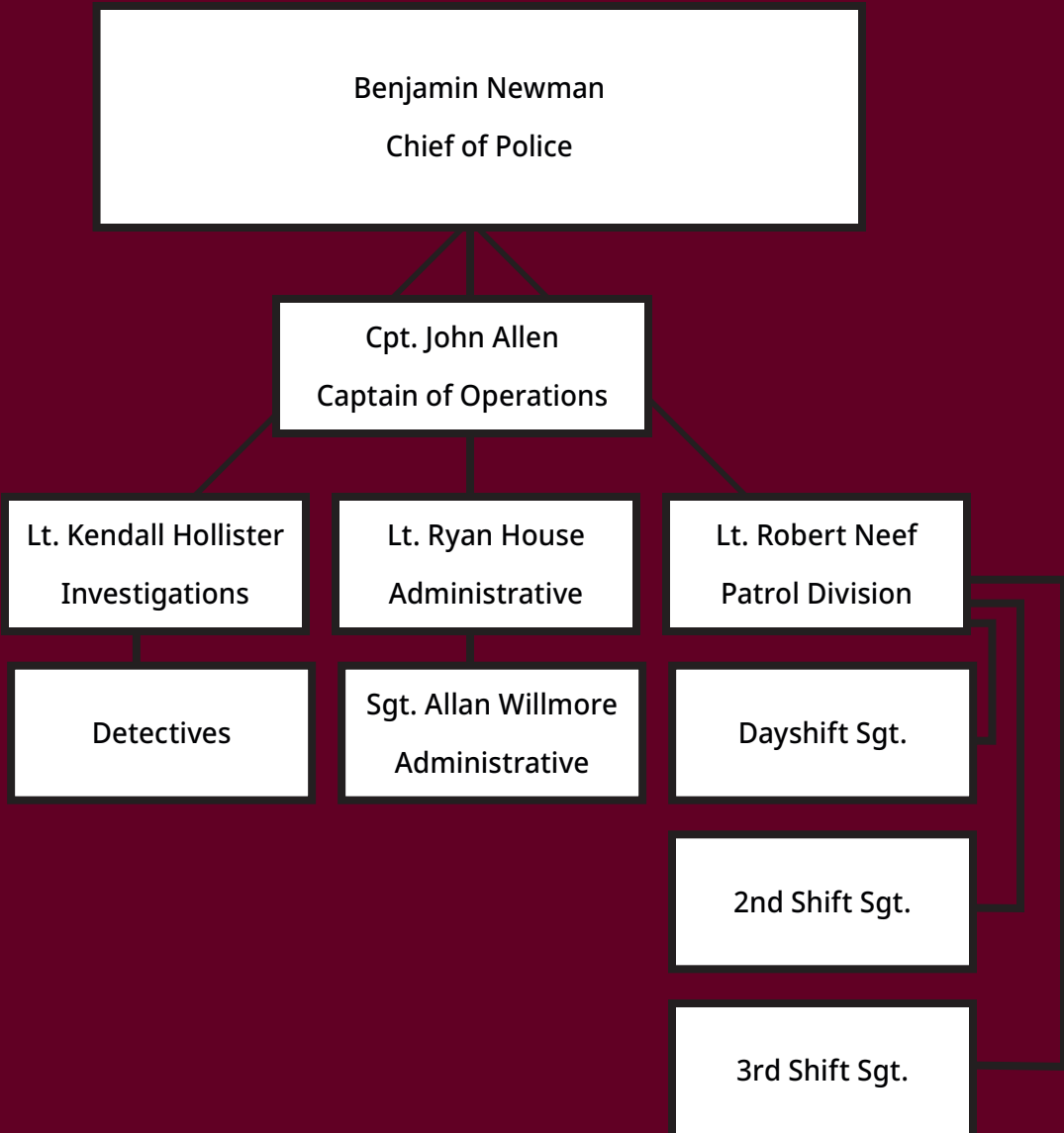
"The One Mind Campaign, an IACP effort, seeks to ensure successful interactions between police officers and persons affected by mental illness. The initiative focuses on uniting local communities, public safety organizations, and mental health organizations so that the three become 'of one mind.'"

The department also utilizes a Mental Health Task Force to monitor outreach efforts.

GOAL 7: *Develop, implement, and maintain programs aimed at reducing the impact of criminal behavior.*

PROGRESS: *Crime analysis provides agency personnel an in-depth look at current crime trends and crime patterns. Data collected from Clery reporting, Uniform Crime Reporting, and other sources provide the foundation for crime analysis. The department utilizes crime data to develop crime prevention strategies, including programming. Department personnel actively engage community members in the quest to provide a safe and secure learning environment.*





COMMAND STAFF STRUCTURE

DEPARTMENT OF PUBLIC SAFETY STRUCTURE

The Southern Illinois University Department of Public Safety is divided into four major divisions: Field Services, Investigations, Administrative Services, and the Parking Division.

FIELD SERVICES

Field Services Operation is the largest division of the SIU Carbondale Department of Public Safety and comprises Police Patrol, Saluki Patrol, Community Resource Officers and Police Housing Liaisons. The purpose of the Field Services Operation is to provide the highest level of police protection and community assistance twenty four hours a day, three hundred and sixty five days a year.

POLICE PATROL

The Police Patrol Division of the Field Services Operation is divided into three shifts: first shift (7 a.m. - 3 p.m.), second shift (3 p.m. - 11 p.m.) and third shift (11 p.m. - 7 a.m.). Each officer working in the Patrol Division is assigned to one of the three shifts. Providing direct supervision and leadership for each shift is a Sergeant and a Corporal. Two Lieutenants—one supervising First Shift and Parking Division, and one supervising Second and Third Shift—are also assigned to patrol to help maintain the credibility, safety and integrity of SIU police officers and police operations.

In 2019, the Patrol Division continued with a campus community initiative focusing on conducting campus and housing presentations on a variety of topics. Close to 800 presentations were conducted in 2019 on the topics of Crosswalk Safety, Theft Prevention, Severe Weather Safety, Alcohol Safety and Awareness, Identity Theft, Sexual Assault Awareness and Prevention and General Safety tips on campus.

Patrol Division logged over 24,000 separate patrol activities which generated over 1,900 reports in 2019 and looks forward to continuing to engage the campus community with professional, kind, and compassionate service for all while holding individuals accountable for their action..



DEPARTMENT OF PUBLIC SAFETY STRUCTURE

SALUKI PATROL



Created in 1959, the Saluki Patrol became the first student police organization initiated on a college campus in the United States. The mission of the Saluki Patrol is to assist the SIU Police in the protection of life and property, preserving the peace, and providing general service beneficial to the university community. Saluki Patrol members are non-sworn SIU students who assist the SIU Police in a number of areas including foot patrol, building security, traffic direction, crowd control, parking enforcement, as well as enforcing university rules and regulations. Since its inception, the unarmed student security force has augmented the efforts of sworn officers and provided valuable public service to the campus community. Student police organizations began being created at other universities as the program gained more national attention. The Saluki Patrol has continued to evolve and become more professional, with Saluki Patrol personnel receiving some of the same police training as sworn officers. Many leaders in the law enforcement community both locally and at the state and federal level began their careers as Saluki Patrol.

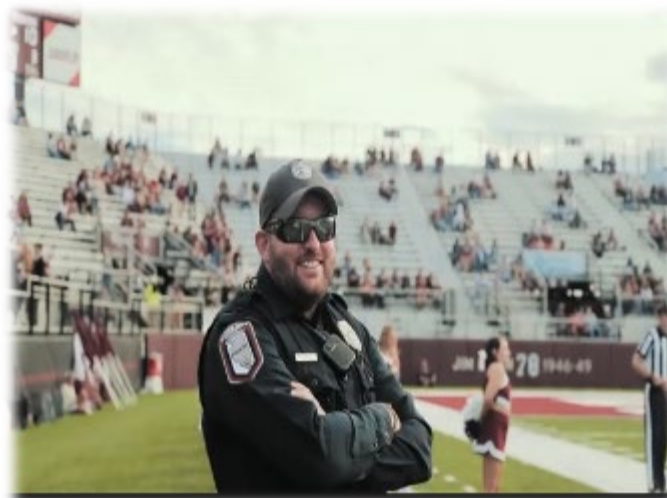
Saluki Patrol also provides escorts to members of the campus community. Initiated by a simple request on the Saluki Safe Walk app, this program provides another avenue for students to keep themselves safe on campus.

DEPARTMENT OF PUBLIC SAFETY STRUCTURE

COMMUNITY RESOURCE OFFICER

University Housing and Department of Public Safety collaborate in an effort to resolve community issues impacting the safety and security of University Housing student residents, guests, and staff. The intent of this cooperative effort is to improve the overall quality of life across University Housing residence halls, programming spaces, and dining facilities. Together, the SIU Department of Public Safety and University Housing have designated an officer whose sole responsibility is to be a resource for University Housing facilities. This officer, known as a Community Resource Officer (CRO), provides an open and on-going channel of communication between the various University Housing communities and the police department.

The goal of the program is to create and promote a positive and proactive police presence in the residence hall communities and surrounding areas, build more positive perceptions about the presence of uniformed police officers in the community, and to build better relationships between students and Public Safety. The CRO seeks to proactively address identified problems associated with criminal activity, issues associated with safety and security, and overall behaviors that negatively affect the quality of life for on campus residents. Additionally, the program endeavors to assist University Housing and university staff with creating a positive living/learning environment through educational enforcement efforts and positive community interaction and program delivery



POLICE LIAISON PROGRAM



The Police Liaison Program was initiated to promote the safety of students and staff and enhance the quality of life in the residence halls through the presentation of safety programs and the involvement of officers in a more constant and intense level.

The program provides an open and on-going channel of communication between the student residential communities and the police department. The goal of the program is to foster a partnership with students and staff to address any issues that affect safety and the quality of life in the student residential areas.

Police officers assigned to the police liaison program attend housing staff meetings, coordinate special presentations, and provide relevant safety information to the members of the community. In addition, the liaison officers seek information and input from University Housing staff as to the specific and varying needs of each housing area. Regular communication is essential in the performance of these duties. Officers routinely make contact with their assigned areas. Officers also spend additional patrol time in their respective areas in an effort to interact with more residents and to gain a better feel for the day-to-day activities in each community.



Community Interest Case

THEFT OF GOVERNMENTAL PROPERTY

On March 28, 2019 after a three month investigation, detectives with the Department of Public Safety arrested an SIU Associate Professor for theft of governmental property, with total value between \$10,000.00 and \$100,000.00. The investigation revealed that multiple pieces of laboratory equipment belonging to SIU had been stolen and sold online.

DEPARTMENT OF PUBLIC SAFETY STRUCTURE

ADMINISTRATIVE SERVICES

The Administrative Services Division consists of All-Hazards Preparedness, the Clery Compliance Coordinator, Payroll Accountant, Records Management and a Police Information analyst. The division is staffed with two police officers and three civilian employees, supervised by a Lieutenant.

The All-Hazards Preparedness coordinator works with the university community and develops Building Liaison Teams, which consist of a network of volunteer faculty and staff who help to create and enforce emergency response plans and procedures for specific buildings on campus. This multi-phase endeavor will eventually encompass every building on the SIU Carbondale campus. The goal of this initiative is to provide a uniform response to emergencies occurring within each structure, and program continuity as team members retire or move to other assignments.

Employees are tasked with providing the campus community with information regarding theft, alcohol and drug awareness, personal security, traffic safety, and university resources. Working closely with the Field Services Division, this unit strives to continually update the resources used in campus and housing presentations, and coordinate larger proactive events.

The Records Management Division gathers and monitors crime statistics for the University Crime Report. They review hundreds of reports a year and forward them to the appropriate personnel for Clery reporting, further review and prosecution. Between January and December 2019 the Records Management Division processed close to 2000 incident reports, vehicle code violations, and university rules and regulations violations.

The Police Information Analyst is a police officer charged with analyzing data retrieved from computer searches of internal and external databases, police department reports, and various open source documents to identify crime, crime patterns, relationships, and trends. This position also is responsible for updating departmental web information, analyzing crime and perform other administrative functions under the general direction of the Director of Public Safety

SOCIAL MEDIA



A dedicated Social Media Team works daily on providing relevant and up-to-date information that impacts the campus community. The team works together in a collaborative effort to create various publications for viewing. In 2019, SIU DPS was assisted in developing their first interaction video. Follow us on our social media platforms for news updates, event information, and other announcements.



DEPARTMENT OF PUBLIC SAFETY STRUCTURE

INVESTIGATIONS DIVISION

The division is comprised of several trained investigators that specialize in a variety of different crimes, such as juveniles, sex offenses, narcotics, and financial crimes. One detective also specializes in investigating online and electronic crimes.

The division also includes an evidence custodian that specializes in handling, storage, maintenance, and disposal of law-enforcement-held property and evidence. The property and evidence room maintains the integrity of evidence for criminal prosecutions, as well as the safe keeping of property for all citizens who come in contact with the Department.

The Investigations Division's primary responsibility is to conduct follow-up investigations of criminal matters referred to them. The detectives are responsible for follow-up on all assigned cases until such time the case can be cleared or satisfactorily closed. Cases can be cleared or closed by arrest, determining no crime was actually committed, or exhausting all investigative leads. Investigations work together with citizens, as well as other divisions, to reduce crime and the fear of crime throughout the campus community.



DEPARTMENT OF PUBLIC SAFETY STRUCTURE



PARKING DIVISION

The Parking Division is primarily responsible for meeting the parking needs of the campus community. It does this by issuing various parking decals to students and staff, and monitoring parking areas on campus during normal business hours.

The revenue generated through the Parking Division pays for maintenance of parking lots and roadways around campus. The revenue also pays for recently upgraded LED nighttime lighting in campus lots.

The Parking Division utilizes citations, vehicle immobilization, and towing as parking enforcement options. These options allow parking agents to effectively address repeat offenders.

Parking also handles registration for SIU Bike Watch. All bicycles parked on campus are required to be registered, either by SIU or by the City of Carbondale. Registering your bicycle aids the Department of Public Safety and local law enforcement agencies with the recovery of your bicycle in the event of loss or theft.

Staff and students may bring their SIU ID along with their bicycle to the Parking division office during regular business hours to complete the free registration process to receive a decal.

PARKING DIVISON SATELLITE OFFICE

To benefit faculty, staff, students and visitors, in 2019 the Parking Division opened an auxiliary office inside the Student Center. Located on the ground level in the north corridor across from the bookstore

Community Interest

\$7,000 IN SIU PARKING TICKETS PAID WITH... CANNED FOOD

A one-day food drive, gave delinquent parkers the chance to cancel a citation, up to \$35 per person, with the donation of at least six cans of fruit or protein items. Staff donated the collected food to the Saluki Food Pantry, located on the lower level of the Student Center. This Pantry provides food assistance to students in times of need, helping them to stay in school and meet their educational goals.

SAFETY ON CAMPUS

SIU's support of students extends to maintaining a safe environment for the campus community. A number of programs are designed to assist and educate students on safety, including a night transit service and Brightway Paths.

Student and staff email accounts are automatically subscribed to the RAVE Mobile Safety alert system employed by the Department of Public Safety to send notifications of university emergencies; other delivery methods, such as text messages, can be easily added.

SIU SAFE WALK

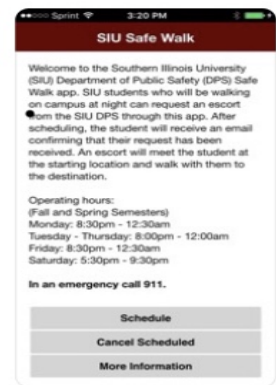
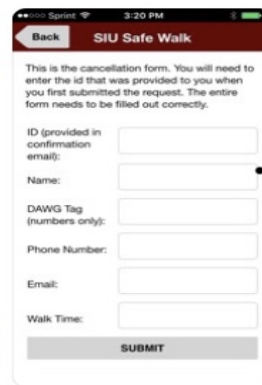
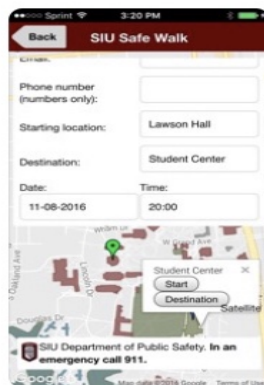
The Department of Public Safety has developed a mobile app to assist students, faculty and staff with the opportunity to walk to various locations on campus with an escort. The SIU Safe Walk app is available free through your app store. When a walk is requested, a confirmation email will be sent from the DPS dispatcher on duty. Saluki Patrol officers will meet the person requesting the walk at the designated start location and time.



SIU Safe Walk
Navigation

★☆☆☆☆ 1

GET



EMERGENCY CALL BOXES

In 2019, new Emergency call boxes were installed at various locations throughout campus, including parking lots, sidewalks and the main entrances to all the residence halls. They are labeled "Emergency" and are mounted on white poles topped with blue strobe lights. These lights are activated when a call is made. The call boxes located at the residence halls are yellow and are attached to the building.

Upon pushing the button and activating the box, direct contact is made with a 911 dispatcher who will assist with your emergency and send first responders.



SAFETY ON CAMPUS

THE BRIGHTWAY PATH

The Brightway Path was designed as a pedestrian path with enhanced lighting. People are encouraged to use this path when walking after dark. Bright yellow signs are posted near the sidewalks that are a part of this path. The Brightway Path may not always be the most direct route, but it is the safest.



Community Interest Case

EXPLOSIVE DEVICE

On 03/19/2019, DPS Bomb Squad members responded to a residential area off campus for a report of a suspicious device under a residential home. The device was located and determined to be a functioning explosive. The device was processed and dismantled without any injuries or damage.

SAFETY ON CAMPUS

SAFE.SIU.EDU

SAFE at SIU is a resource for undergraduate and graduate students, faculty, staff and visitors of SIU. This website contains information about campus resources, crime reporting, crime prevention and campus safety. Additional information is available on the university reporting structure for incidents related to sexual violence, domestic and dating violence, stalking and sexual harassment.

Community Interest Case

BURGLARY

On January 30, 2019, DPS officers were dispatched to Brown Hall in reference to a Residential Burglary in progress. After investigating the scene, a suspect was identified, located and interviewed. As a result of the investigation, a suspect was arrested and charged with two counts of Residential Burglary, Possession of Drug Paraphernalia, Possession of Controlled Substance, and Possession of False ID Card. Over \$600 of stolen items were recovered and returned to their owners.



MEET THE DEPARTMENT OF PUBLIC SAFETY

DPS COMMAND STAFF

Benjamin Newman

Director of Public Safety,
Chief of Police

Captain John Allen

Captain of Operations

Lt. Kendall Hollister

Investigations
Commander

Lt. Ryan House

Administrative
Services Commander

Lt. Robert Neef

Patrol Division
Commander

DEPARTMENT OF PUBLIC SAFETY

Sergeant Allan Willmore

Administrative Sergeant

Sergeant Geoffery Geittmann

Patrol

Sergeant Jason Russell

Patrol

Sergeant Brian Murphy

Patrol

Corporal Carrie Keith

Patrol

Detective Renee Eberhard

Serving since March 1999

Officer Heather Pendley

Serving since June 2014

Corporal Adam Cunico

Patrol

Officer Marzine Rafe

Service since March 1999

Officer Michael Allen

Serving since August 2014

Corporal Tyler Harrell

Patrol

Officer Dennis Followell

Serving since 2000

Officer Daniel Presley

Serving since July 2015

Corporal Adam Fager

Patrol

Officer Kevin Cox

Serving since 2004

Detective Lee Nguyen

Serving since July 2015

Corporal Dustin Borum

Patrol

Officer Mary Stark

Serving since 2006

Officer Derrick Smith

Serving since September 2015

Corporal Shawn Tuthill

Patrol

Officer Bryan Pyatt

Serving since January 2011

Officer Brandon Gibbs

Serving since April 2017

Detective Scott Miller

Serving since July 1991

Detective Justin Emery

Serving since March 2013

Officer Mychal Gooch

Serving since May 2018

Officer Michelle Bryant

Serving since August 1995

Officer John Christel

Serving since March 2012

Officer Anthony Stein

Serving since May 2018

Officer William Dozier

Serving since March 1999

Officer Destiny Dintelman

Serving since April 2014

Officer Faviola Lopez

Serving since January 2019

TRAINING AND CAPABILITIES

DPS IN-SERVICE TRAINING 2019

DPS officers receive formal training in the areas of cultural diversity, mental health, CPR, weapons proficiency, community policing, search and seizure, drug/substance awareness and many other topics. These trainings are broken down into quarterly training sessions to ensure officers receive the most up to date training.

Taught by DPS certified instructors, officers receive annual instruction on control tactics, arrest procedures, less lethal, and pressure points. Local CPR instructors and Jackson County Ambulance staff are brought in to instruct on CPR and basic officer buddy aid.

At each quarterly in-service training, officers complete weapons training. The weapons training varies from a fifty round handgun qualification, a thirty round handgun qualification, a rifle qualification course of fire or a shotgun qualification course of fire. All of the firearms training is coordinated through the department Master Firearms Instructor and all of the on range training is monitored by qualified firearms instructors.

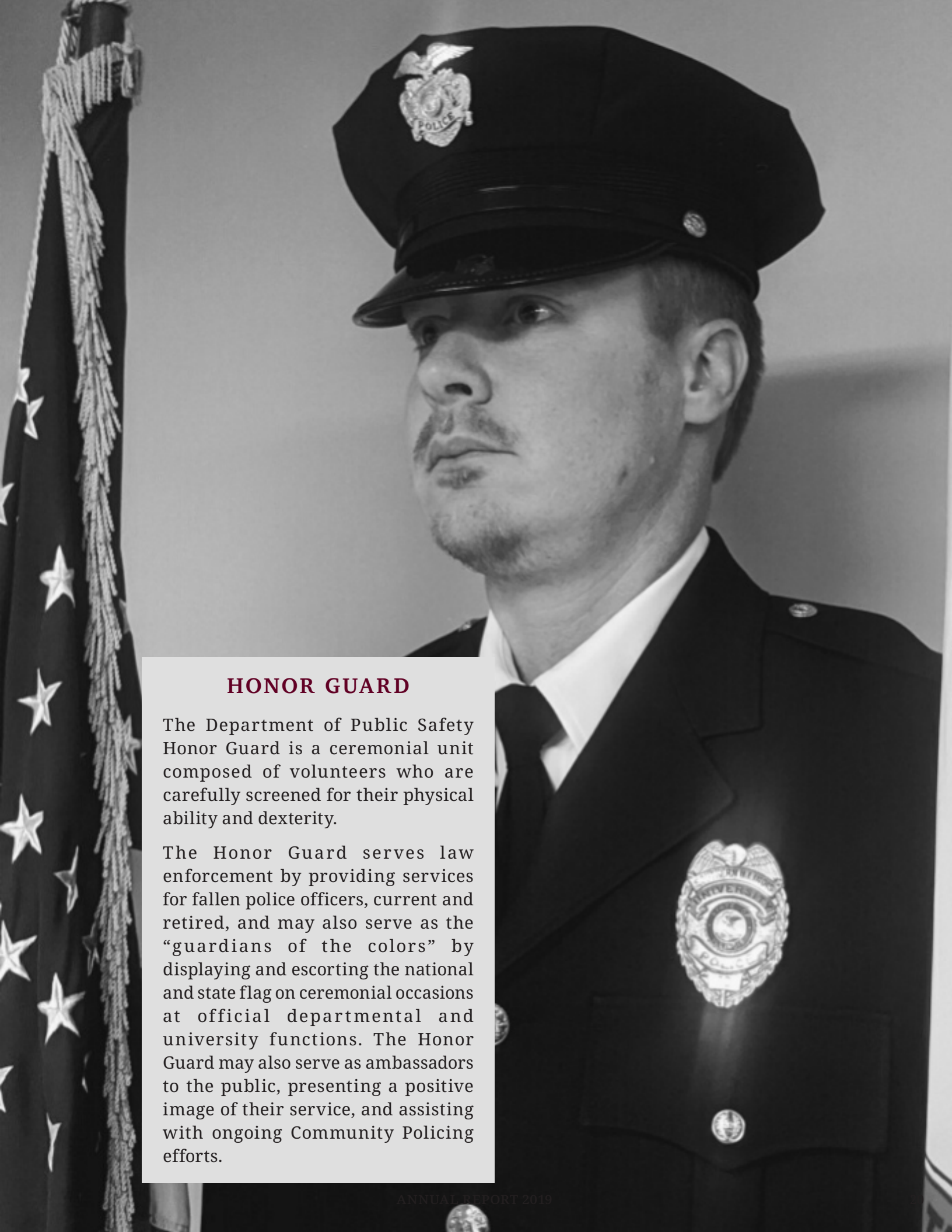


BOMB SQUAD

The Southern Illinois University and Carbondale Police Bomb Squad was created in 1998 as a joint unit made up of SIU and Carbondale Police Officers. The team was created after an incident where a suspicious package was placed outside the police department on the campus of SIU. The closest team trained to handle such an incident was Scott Air Force Base. The time it took for the Explosives Ordinance Disposal Team to respond once dispatched was approximately three hours. After this incident the department decided to create a team designed to handle such calls and have officers specially trained as Bomb Technicians.

The purpose of the Bomb Squad is to provide a professionally trained unit capable of rendering safe and/or removing suspected improvised explosives devices, incendiary devices, explosives, explosive chemicals, pyrotechnics and ammunition. The Bomb Squad also provides an educational resource to the University and local communities.

To be certified as a Bomb Technician one must attend a 40 hour Emergency Responder Hazardous Materials Technician course. After completion of this course the officer is enrolled in the six week Hazardous Devices School at Redstone Arsenal, Huntsville, Alabama, to receive their certification as a Bomb Technician.



HONOR GUARD

The Department of Public Safety Honor Guard is a ceremonial unit composed of volunteers who are carefully screened for their physical ability and dexterity.

The Honor Guard serves law enforcement by providing services for fallen police officers, current and retired, and may also serve as the “guardians of the colors” by displaying and escorting the national and state flag on ceremonial occasions at official departmental and university functions. The Honor Guard may also serve as ambassadors to the public, presenting a positive image of their service, and assisting with ongoing Community Policing efforts.

TRAINING AND CAPABILITIES

POLICE MOUNTAIN BIKE UNIT

The SIU Police Mountain Bike Unit exists to bridge the gap between foot patrol and vehicular patrol. Bicycles enhance officer mobility, while allowing access to areas that would be inaccessible by vehicle. Bicycle patrol is highly visible and helps build connection with the community. Members of the unit receive rigorous training and are certified through the International Police Mountain Bike Association. This training includes bicycle maintenance and repair, cycling skills, and tactics.



TACTICAL RESPONSE TEAM

The SIU Tactical Response Team (TRT) was formed in 1991. The mission of TRT is to provide the department and the University the capability to safely resolve high-risk situations requiring specialized response.

In 2009, TRT began training and conducting operations jointly with the Carbondale Police Department Special Response Team. During their monthly training sessions, the team works on movements, building entry, explosive breaching, barricaded subjects, live fire, less lethal munitions, and hostage negotiations scenarios with the Hostage Negotiations Team.

Qualified applicants are chosen after participating in an interview with current TRT members and approval is given by the SIU Chief of Police. New members must pass a department approved TRT training programs and semi-annual physical fitness test.

The Tactical Response Team's ultimate goal is to improve public safety for both the University community and the city of Carbondale.



TRAINING AND CAPABILITIES

ILLINOIS LAW ENFORCEMENT ALARM SYSTEM

MUTUAL AID RESPONSE TEAM

The SIU Department of Public Safety is a member of the Illinois Law Enforcement Alarm System. This is a joint venture of the Illinois Association of Chiefs of Police, Illinois Sheriff's Association, and the Illinois Emergency Management Agency. It was created to meet the needs of law enforcement throughout the state of Illinois in matter of mutual aid, emergency response and the combining of resources for public safety.

SIU is the Commanding Unit for ILEAS Regions 9 and 11, Mobile Field Force team. This unit is made up of officers from across 35 different counties in Southern Illinois. SIU DPS has nine officers assigned to the team that proudly serve in various capacities.



CRISIS INTERVENTION TEAM (CIT)



The Crisis Intervention Team (CIT) program is a community partnership of law enforcement, mental health and addiction professionals, individuals who live with mental illness and/or addiction disorders, their families and other advocates. It is an innovative first-responder model of police-based crisis intervention training to help persons with mental disorders and/or addictions access medical treatment rather than place them in the criminal justice system due to illness related behaviors. It also promotes officer safety and the safety of the individual in crisis

CLERY ACT ACTIVITIES

THE JEANNE CLERY ACT

The Jeanne Clery Disclosure of Campus Security Policy and Campus Crime Statistics Act (Clery Act) is a federal mandate requiring all institutions of higher education that participate in the federal student financial aid program to disclose information about crime on their campuses and in the surrounding communities.

The Clery Act affects virtually all public and private IHEs and is enforced by the U.S. Department of Education (ED). Campuses that fail to comply with the act can be penalized with large fines and may be suspended from participating in the federal financial aid program.

CLERY DEFINITIONS

On-Campus Property: (1) Any building or property owned or controlled by the campus within the same reasonably contiguous geographic area and used by the campus in direct support of, or in a manner related to, the campus' educational purposes, including residence halls; and (2) any building or property that is within or reasonably contiguous to the area identified in paragraph (1), that is owned by the campus but controlled by another person, is frequently used by students, and supports campus purposes (e.g., a food or retail vendor).

Non-Campus Property: (1) Any building or property owned or controlled by a student organization that is officially recognized by the campus, or (2) any building or property owned or controlled by the campus that is used in direct support of, or in relation to, the campus' educational purposes, is frequently used by students, and is not within the same reasonably contiguous geographic area of the campus.

Public Property: All public property, including thoroughfares, streets, sidewalks and parking facilities, that is within the campus or immediately adjacent to and accessible from the campus.

CLERY ACT MANDATES

- Collect, classify, and count crime reports and statistics related to crime.
- Issue timely warnings and campus alerts for Clery crimes that represent an ongoing threat to the safety of students or employees, or emergency notifications upon confirmation of a significant emergency or dangerous situation involving an immediate threat to the health or safety of students or employees.
- Publish an annual security report containing safety and security-related policy statements and crime statistics, and distribute it to all current students and employees.
- Maintain a daily crime log of alleged criminal incidents that is open to public inspection.
- Identify and train campus security authorities.

THE VIOLENCE AGAINST WOMEN ACT

The Clery Act (Section 485(f) of the Higher Education Act) was modified by the Violence Against Women Act (VAWA) in 2014. VAWA requires institutions to compile statistics on incidents of dating violence, domestic violence, sexual assault and stalking in an annual security report.

UNIFORM CRIME REPORT SUMMARY

This summary report covers 1,756 incidents (criminal and non-criminal) that occurred from January through December 2019, and for which incident or service reports were written by the SIU Department of Public Safety.

The 1,756 incidents covered in this report compare with 1,856 in 2018 and 2,326 in 2017. The Criminal Offense total of 327 compares with 319 in 2018 and 488 in 2017.

The full report contains individual summaries for each major classification and a listing of individual incidents in the three crime classifications, reflecting the report number, the date the incident occurred, the date, time and location of the incident, dispositions, etc.

Breakdown of All Incidents and Services by Major Classification

Criminal Offenses

Crimes Against Persons	18
Crimes Against Property	169
Crimes Against Society	140
*Total:	327

*Data below pertains only to the Criminal Offense Classifications.

Other Incidents

Motor Vehicle Accidents	121
Illinois Vehicle Code Violations	117
University Rules and Regulations	126
Other Police Service Activity Reports	1,065

Breakdown of Criminal Offenses by Location and/or Living Center on Campus

Neely Hall	14	Davies Gym		C'Ville - Old Campus	
Mae Smith	10	Faner Hall	4	Shryock Auditorium	
Schneider Hall	4	Glove Factory		Student Center	18
Wall & Grand Apts.	14	Health Center		Student Services Bldg.	7
Grinnell/Trueblood	2	Lawson Hall	2	Tech. Complex	
Thompson Point	50	Life Science II, III		Thompson Woods	
Lentz Hall	3	Lindegren Hall	1	Touch of Nature	6
Greek Row	2	Saluki Stadium	1	Washington Square	11
Southern Hills	1	McLafferty Lib. Stg.		Wham Ed. Bldg.	3
Evergreen Terrace	11	Morris Library	5	Woody Hall	9
University Hall	7	Neckers Bldg.	3	Other Buildings	6
Agriculture Bldg.	2	Northwest Annex	1	Parking Lots	34
Allyn Bldg.		Parkinson/Browne	3	Parking Lot 23	3
Altgeld Hall	4	Pulliam Hall	1	Parking Lot 45	13
Anthony Hall		Quigley Hall	3	Parking Lot 59	4
Arena/Lingle Hall	2	Recreation Center	16	Parking Lot 80	3
Blue Barracks		Rehn Hall	2	Parking Lot 106	3
Communications Bldg.	2	ASA Bldg.	1	All Other Areas	24
				Off Campus Areas	12

Breakdown by Day and Time

Day of Week

Monday	31
Tuesday	20
Wednesday	38
Thursday	32
Friday	51
Saturday	57
Sunday	35
Unknown Day	63

Time of Day

0700-1500	81
1500-2300	112
2300-0700	71
Unknown Time	63

CRIMES AGAINST PERSONS

Summary

There were 18 incidents of Crimes Against Persons from January through December 2019.

Breakdown by Location and/or Living Center on Campus

Neely Hall		Davies Gym		C'Ville - Old Campus	
Mae Smith		Faner Hall		Shryock Auditorium	
Schneider Hall		Glove Factory		Student Center	1
Wall & Grand Apts.	1	Health Center		Student Services Bldg.	
Grinnell/Trueblood		Lawson Hall		Tech. Complex	
Thompson Point	8	Life Science II, III		Thompson Woods	
Lentz Hall	1	Lindgren Hall		Touch of Nature	
Greek Row		Saluki Stadium		Washington Square	
Southern Hills		McLafferty Lib. Stg.		Wham Ed. Bldg.	
Evergreen Terrace	2	Morris Library	1	Woody Hall	
University Hall	1	Neckers Bldg.		Other Buildings	1
Agriculture Bldg.		Northwest Annex		Parking Lots	1
Allyn Bldg.		Parkinson/Browne	1	Parking Lot 23	
Altgeld Hall		Pulliam Hall		Parking Lot 45	
Anthony Hall		Quigley Hall		Parking Lot 59	
Arena/Lingle Hall		Recreation Center		Parking Lot 80	
Blue Barracks		Rehn Hall		Parking Lot 106	
Communications Bldg.		ASA Bldg.		All Other Areas	
				Off Campus Areas	

Breakdown by Incident Title

Murder	
Attempted Murder	
Other Homicides	
Aggravated Criminal Sexual Assault	
Attempted Aggravated Criminal Sexual Assault	
Criminal Sexual Assault	4
Attempted Criminal Sexual Assault	
Aggravated Criminal Sexual Abuse	
Criminal Sexual Abuse	
Other Sex Offenses	
Aggravated Battery-Weapon	1
Aggravated Battery-Injury	
Aggravated Battery-Other	
Simple Battery	1
Reckless Conduct	1
Domestic Battery	5
Aggravated Domestic Battery	
Aggravated Assault-Weapon	2
Aggravated Assault-Other	
Simple Assault	2
Intimidation	2
Hate Crime	
Stalking	
Kidnapping/Forced Detention	
Unlawful Restraint	
All Other Against Persons	

Breakdown by Day and Time

Day of Week

Monday	3
Tuesday	1
Wednesday	2
Thursday	1
Friday	4
Saturday	4
Sunday	2
Unknown Day	1

Time of Day

0700-1500	4
1500-2300	11
2300-0700	2
Unknown Time	1

Clearances

By Arrest	10
By Referral	8

Comparison

2019	18
2018	21
2017	35

CRIMES AGAINST PROPERTY

Summary

There were 169 incidents of Crimes Against Property from January through December 2019.

Breakdown by Location and/or Living Center on Campus

Neely Hall	6
Mae Smith	3
Schneider Hall	
Wall & Grand Apts.	8
Grinnell/Trueblood	2
Thompson Point	14
Lentz Hall	2
Greek Row	2
Southern Hills	3
Evergreen Terrace	7
University Hall	
Agriculture Bldg.	2
Allyn Bldg.	
Altgeld Hall	
Anthony Hall	
Arena/Lingle Hall	2
Blue Barracks	
Communications Bldg.	2
Davies Gym	
Faner Hall	4
Glove Factory	
Health Center	
Lawson Hall	2
Life Science II, III	
Lindegren Hall	
Saluki Stadium	1
McLafferty Lib. Stg.	

Morris Library	2
Neckers Bldg.	3
Northwest Annex	1
Parkinson/Browne	1
Pulliam Hall	1
Quigley Hall	3
Recreation Center	13
Rehn Hall	2
ASA Bldg.	1
C'Ville - Old Campus	
Shryock Auditorium	
Student Center	10
Student Services Bldg.	2
Tech. Complex	2
Thompson Woods	
Touch of Nature	3
Washington Square	7
Wham Ed. Bldg.	3
Woody Hall	9
Other Buildings	4
Parking Lots	18
Parking Lot 23	1
Parking Lot 45	5
Parking Lot 59	3
Parking Lot 80	3
Parking Lot 106	2
All Other Areas	7
Off Campus Areas	3

Breakdown by Day and Time

Day of Week

Monday	20
Tuesday	9
Wednesday	18
Thursday	14
Friday	19
Saturday	22
Sunday	8
Unknown Day	59

Time of Day

0700-1500	49
1500-2300	49
2300-0700	12
Unknown Time	59

Clearances

By Arrest	32
By Referral	10

Comparison

2019	169
2018	149
2017	200

Breakdown by Incident Title

Armed Robbery	
Strong-arm Robbery	
Attempted Robbery	
Burglary - Forcible Entry	1
Burglary - Unlawful Entry	7
Residential Burglary - Forcible Entry	
Residential Burglary - Unlawful Entry	6
Attempted Burglary - Forcible	
Theft from Motor Vehicle	5
Burglary from Motor Vehicle	9
Retail Theft	2
Theft Over \$500	10
Theft Under \$500	43
Theft From Coin Machine	
Attempted Theft	
Motor Vehicle Theft	1
Attempted Motor Vehicle Theft	

Arson	3
Attempted Arson	
Deceptive Practice	12
Forgery/Fraud	10
Possession Stolen Property	
Identity Theft	
Theft of Services	5
Theft of Mislaid Property	6
Computer Crimes	
Library Theft/Vandalism	
Criminal Damage to Property	20
Criminal Damage to State Property	26
Criminal Defacement	3
All Other Against Property	
*Theft of Bicycles	17
*Theft of SIU Property	18
*Criminal Damage to Vehicle	16

These totals previously included

CRIMES AGAINST SOCIETY

Summary

There were 140 incidents of Crimes Against Society from January through December 2019.

Breakdown by Incident Title

Possession of Explosive/Incendiary Device	
Criminal Trespass Property/Residence	1
Criminal Trespass State Property	12
Criminal Trespass Vehicle	
Unlawful Use of Weapon	1
All Other Weapons Violations	1
Public Indecency	
Other Sex Offenses This Class	
Runaway	
Other Offenses Affecting Children	
Cannabis - Possession 10gm or less	26
Cannabis - Possession 10gm to 100gm	
Possession Drug Paraphernalia	20
Delivery on School Grounds	
DUI - Alcohol/Drugs	8
Controlled Substance - Possession	1
Controlled Substance - Other	
Methamphetamine Offenses	1
Illegal Possession/Consumption Alcohol	33
Other Alcohol Violations	3
Public Urination	
Vagrancy/Drunkenness	
Prowler/Peeping Tom	
Telephone Harassment/Obscene/Threatening	3
False Fire Alarm - Intentional	
Bomb Threat	
False Police Report - Intentional	
Disorderly Conduct - General	11
Illegal Transportation Alcohol	3
Air Rifles	
Fireworks	
Mob Action	
Armed Violence	
Public Demonstration	
Resisting/Obstructing Police Officer	3
Obstructing Justice	2
Escape	
Possession of Burglary Tools	
Violation Order of Protection	
Probation/Parole Violation	
Unauthorized Video Recording	
Hypodermic Needles/Syringe	1
Intoxicating Compounds	1
All Other Against Society	9

Breakdown by Location and/or Living Center on Campus

Neely Hall	8	Neckers Bldg.	
Mae Smith	7	Northwest Annex	
Schneider Hall	4	Parkinson/Browne	1
Wall & Grand Apts.	5	Pulliam Hall	
Grinnell/Trueblood		Quigley Hall	
Thompson Point	28	Recreation Center	3
Lentz Hall		Rehn Hall	
Greek Row		ASA Bldg.	
Southern Hills		C'Ville - Old Campus	
Evergreen Terrace		Shryock Auditorium	
University Hall	6	Student Center	6
Agriculture Bldg.		Student Services Bldg.	3
Allyn Bldg.	4	Tech. Complex	1
Altgeld Hall		Thompson Woods	
Anthony Hall		Touch of Nature	3
Arena/Lingle Hall		Washington Square	2
Blue Barracks		Wham Ed. Bldg.	
Communications Bldg.		Woody Hall	
Davies Gym		Other Buildings	3
Faner Hall		Parking Lots	15
Glove Factory		Parking Lot 23	2
Health Center		Parking Lot 45	8
Lawson Hall		Parking Lot 59	1
Life Science II, III		Parking Lot 80	
Lindegren Hall	1	Parking Lot 106	1
Saluki Stadium		All Other Areas	17
McLafferty Lib. Stg.		Off Campus Areas	9
Morris Library	2		

Breakdown by Day and Time

Day of Week		Time of Day	
Monday	8	0700-1500	28
Tuesday	10	1500-2300	52
Wednesday	18	2300-0700	57
Thursday	17	Unknown Time	3
Friday	28		
Saturday	31		
Sunday	25		
Unknown Day	3		

Clearances

By Arrest	128
By Referral	3

Comparison

2019	140
2018	149
2017	252

Suicide (NOT included in totals)

Suicide - Attempted	5
Suicide - Threatened	13

ILLINOIS VEHICLE CODE VIOLATIONS PLUS WRITTEN WARNINGS AND UNIVERSITY CITATIONS

Summary

There were 121 violations of the Illinois Vehicle Code, 154 written warnings, and 26 university citations from January through December 2019.

Breakdown by Incident Title*

Reckless Driving	
Hit and Run	
Drag Racing	
No Valid Registration	7
Revoked/Canceled Registration	
Improper Use of Registration	
No Valid Driver's License	8
Suspended/Revoked Driver's License	14
Unlawful Use Driver's License	
Fleeing/Eluding Police Officer	1
Uninsured Motor Vehicle	17
Suspended for Non-Insurance	1
Anti-Theft Laws	
Other Driver's License Violation	
Disobey Police Officer	
Disobey T/C Device	7
Disobey RR Signal Device	
Disobey Stop/Yield Sign	11
Too Fast for Conditions	9
Exceeding Speed Limit	17
Improper Passing	
Wrong Way on One Way	2
Improper Lane Usage	4
Failure to Yield	6
Failure to Yield to Pedestrian	
Driving on Sidewalk	
Refusal - Breath/Chemical Test**	
Refusal - Duty at Vehicle Accident Scene	2
Pedestrian Violations	
Special Motorcycle Violations	1
Vehicle Equipment Violations	1
Seatbelt/Child Restraint Violations	
Zero Tolerance	1
Distracted Driving	1
Scott's Law	1
All Other IVC Violations	10
**Not included in violation totals	
*DUI and Illegal Transportation appear under "Crimes Against Society"	

Written Warnings

Equipment Violations	42
Driver's License	
Stop/TCD	44
Vehicle Registration	12
Speeding	19
Other	40
Radar	17

Breakdown of IVC Violations by Location

On Campus	103
Off Campus	18

Breakdown by Day and Time

Day of Week

Monday	5
Tuesday	13
Wednesday	18
Thursday	16
Friday	28
Saturday	21
Sunday	20

Time of Day

0700-1500	26
1500-2300	58
2300-0700	37

Comparison (IVC)

2019	121
2018	131
2017	126

University Citations

Speeding	19
No Taillights when Required	1
Wrong Way One-Way	3
Improper Backing	2
Ride Bike In Crosswalk	1
Total:	79

Breakdown by Day and Time

Day of Week

Monday	
Tuesday	4
Wednesday	6
Thursday	5
Friday	8
Saturday	1
Sunday	2

Time of Day

0700-1500	7
1500-2300	16
2300-0700	3

Comparison (Citations)

2019	26
2018	79
2017	101

MOTOR VEHICLES - UNIVERSITY REGULATIONS

Summary

There were 21 vehicles towed 1 plus service charge paid for a total of 22 tow calls from January through December 2019.

Breakdown by Location (Tow Calls)

General Parking Lots	1
University Park	2
Brush Towers	
Thompson Point	7
Greek Row	
Southern Hills	
Evergreen Terrace	
University Hall	
Grand and Wall Apts.	
Arena	1
Pulliam Hall	
Recreation Center	
Classroom Bldgs.	1
Office/Service Bldgs.	5
Student Center	
Health Center	
All Other Areas	5

Breakdown by Reason for Tow Call

	Towed	Charge
Assigned/Restricted Areas	2	
Handicap Zones/Ramps	2	
Previous Tickets/Tow Warning	3	
Service Drives/Areas	1	
Traffic Hazard/Tow Zone	2	1
Abandoned Vehicles	6	
All Other	5	

Breakdown by Day and Time

Day of Week

Monday	1
Tuesday	6
Wednesday	5
Thursday	3
Friday	4
Saturday	2
Sunday	1

Time of Day

0700-1500	7
1500-2300	11
2300-0700	4

Comparison

	Towed	Charge	Total
2019	21	1	22
2018	40	1	41
2017	73	3	76

MOTOR VEHICLE ACCIDENTS

Summary

There were 117 motor vehicle accidents from January through December 2019.

Motor Vehicle Accidents

Accident - Personal Injury	8
Accident - Property Damage	109
Total:	117

Breakdown of Vehicle Accidents by Location

On Campus	102
Parking Lot	75
Off Campus	15
Roadway	42

Comparison

2019	117
2018	106
2017	137

Breakdown by Day and Time

Day of Week

Monday	18
Tuesday	26
Wednesday	23
Thursday	18
Friday	17
Saturday	6
Sunday	7
Unknown Day	2

Time of Day

0700-1500	63
1500-2300	39
2300-0700	13
Unknown Time	2

Tickets issued at Accident Scene: 30
In 16 of the 117 accidents, one of the vehicles left the scene.

UNIVERSITY RULES & REGULATIONS AND POLICE SERVICE REPORTS

Summary

There were 126 incidents involving University Regulations and 1,065 Service Reports from January through December 2019.

Breakdown by Incident Title, University Regulations

Student Conduct (General)	56
Disturbance (General)	7
Loud Party - Music, etc.	2
Housing Violations	
Bicycles (Viol. & Impoundment)	18
Motor Vehicles (Towed, etc.)**	22
Liquor (Viol. & Confiscation)	6
Firearms - Weapons Violations	1
False/Altered SIU ID Card	
Misuse of SIU Property/Land	
Soliciting Violations	
Contraband (Confiscations)	14

** See Tow Summary for Breakdown of These Incidents

Breakdown by Location and/or Living Center on Campus

Neely Hall	7	Morris Library	
Mae Smith	10	Neckers Bldg.	1
Schneider Hall	4	Northwest Annex	1
Wall & Grand Apts.	17	Parkinson/Browne	
Grinnell/Trueblood		Pulliam Hall	
Thompson Point	23	Quigley Hall	1
Lentz Hall	2	Recreation Center	
Greek Row		Rehn Hall	
Southern Hills		ASA Bldg.	
Evergreen Terrace	9	C'Ville - Old Campus	
University Hall	6	Shryock Auditorium	1
Agriculture Bldg.	1	Student Center	2
Allyn Bldg.		Student Services Bldg.	1
Altgeld Hall	1	Tech. Complex	
Anthony Hall		Thompson Woods	
Arena/Lingle Hall	2	Touch of Nature	
Blue Barracks		Washington Square	1
Communications Bldg.		Wham Ed. Bldg.	1
Davies Gym	1	Woody Hall	1
Faner Hall	1	Other Buildings	1
Glove Factory		Parking Lots	4
Health Center		Parking Lot 23	
Lawson Hall	1	Parking Lot 45	
Life Science II, III		Parking Lot 59	1
Lindgren Hall		Parking Lot 80	
Saluki Stadium		Parking Lot 106	
McLafferty Lib. Stg.		All Other Areas	3
		Off Campus Areas	

Breakdown by Incident Title, Service Reports

Building Security	1
Equipment/Grounds Security	
Building Closing Hours	1
Property Damage (Non-Criminal)	24
Utilities (Except Lighting)	11
Safety Hazard (Lights Out)	1
Safety Hazard (All Other)	4
Accidents (Non-Motor Vehicle)	
Bicycle Accidents	3
Fire (Arson Not Suspected)	6
Fire Alarm (Mechanical/Unintentional)	57
Intrusion (Burglar) Alarms	34
Mental Health	27
Employee Conduct	
Emergency Message	
Attempt to Locate - Welfare Check	94
Lost Child/Missing Person	
Animals - Stray/Lost/Sick	11
Sick/Injured - Aid/Transport	93
Provide Special Escort	16
Assist in Gaining Access	1
Student Death	4
Suspicious Auto/Person	33
Assist Other Agency	233
Arrest on Warrant	11
Lost/Found/Recovered Property	190
Missing/Recovered SIU Property	5
All Other Services - Misc.	205

Breakdown by Day and Time

Day of Week

Monday	13
Tuesday	12
Wednesday	22
Thursday	16
Friday	16
Saturday	13
Sunday	12
Unknown Day	

Time of Day

0700-1500	31
1500-2300	55
2300-0700	18
Unknown Time	

Comparison, University Regulations

2019	126
2018	179
2017	259

Comparison, Service Reports

2019	1,065
2018	1,121
2017	1,316

2019 INTERNAL AFFAIRS REPORT

DISPOSITION OF COMPLAINTS

A conclusion of fact shall be made for each investigation into alleged misconduct. The conclusion of fact is the final result of an analysis of the information. Completed internal investigations shall be classified as follows:

- **Unfounded** – when the investigation reveals that the alleged action did not occur
- **Inconclusive** – where the investigation fails to uncover conclusive evidence in support or denial of the alleged action
- **Exonerated** – where investigation reveals that the alleged action did occur and was within Department policy and state law and was appropriate
- **Founded** – when the investigation reveals that the alleged action did occur and was not within Department policy or state law or was inappropriate

COMPLAINTS

From January 1, 2019 to December 31, 2019, there were no citizen complaints against SIU police officer(s).

From January 1, 2019 to December 31, 2019, there were a total of two internal affairs complaints against sworn SIU Department of Public Safety employees. The two investigations involved four sworn officers.

DISPOSITIONS

- **FOUNDED (4)**
Two complaints resulted in three written reprimands, and an employee coaching session.
- **EXONERATED (0)**
No complaints were exonerated.
- **UNFOUNDED (0)**
No complaints were unfounded.

TOTAL OF CITIZEN AND INTERNAL COMPLAINTS: 4



FY 2019 EXPENDITURES

STATE APPROPRIATED FUNDS

Total FY19 State Appropriated Expenditures	\$ 2,220,847.63
---	------------------------

LOCAL ACCOUNTS/SERVICE ACCOUNTS

Salaries and wages	364,605.40
Equipment	91,540.28
Supplies and Services	339,009.59
Total FY2019 Local Accounts/Service Accounts Expenditures	\$795,155.27

AUXILIARY

Salaries and wages	875,127.50
Equipment	20,641.53
Supplies and Services	267,087.38
Utilities and maintenance	417,906.33
Non-mandatory transfers out to Repair and Replacement Reserve (RRR)	500,000.00
Total FY19 Auxiliary Expenditures	\$2,080,762.74
TOTAL FY2019 EXPENDITURES	\$5,096,765.64

COMMUNITY INVOLVEMENT

DEPARTMENT OF PUBLIC SAFETY SUPPORTS SPECIAL OLYMPICS

Special Olympics is a global organization that unleashes the human spirit through the transformative power and joy of sport, every day around the world. Through programming in sports, health, education and community building, Special Olympics is changing the lives of people with intellectual disabilities solving the global injustice, isolation, intolerance and inactivity they face. Special Olympics Illinois provides opportunities for nearly 22,000 athletes, 40,000 volunteers and thousands more people statewide through 18 area programs in all 102 counties of the state.



COMMUNITY INVOLVEMENT

COFFEE WITH A COP



Community policing has long been considered a framework for establishing trust between the community and the police. However, the character and composition of our campus community has changed due to shifting demographics, more commuters, and the introduction of different communication methods such as websites and social media. The reality is that most people have never had dealings with the police and are worried that their concerns are not “big enough” for the police to worry

about or have negative images of police due to erroneous information. Coffee with a Cop provides a relaxed, neutral atmosphere with no speeches, no agenda and no preset subjects. It allows a student, staff, or faculty member to sit down, one on one with an SIU Police Officer and discuss whatever concerns are important to them. These conversations help break through those barriers and develop real relationships. With the coffee graciously provided by Panera Bread of Carbondale, the Department has hosted monthly events during the academic school year at various locations on campus.

DPS AND RAINBOW’S END

Rainbow’s End Child Development Center was established to meet the need for quality and convenient child care to the children of Southern Illinois University Carbondale students, faculty and staff. The primary goal of the Center is to provide a secure and positive atmosphere for children while their parents attend classes and work at SIU Carbondale. Rainbow’s End is an integral part of our campus community and our officers look forward to serving and protecting SIU’s future students.



BACKPACK GIVEAWAY

In 2019, Officers from the Department of Public Safety volunteered their time and resources to successfully distribute over one hundred school backpacks at the second annual Cops for Kids backpack event. These backpacks were filled with school supplies and were provided to school aged children living at Evergreen Terrace. Haircuts were provided by Sports Clips, free of charge at this event. Officers organized the event and it was made possible by generous donations from local businesses and community members. The donations help to alleviate some of the financial burden felt by university students who are also parents.

2019 EMPLOYEE AWARDS

DIRECTOR'S AWARD

Carlo Montemagno
Chancellor



MERITORIOUS SERVICE AWARD

Danny Bean - Parking Agent
Detective Justin Emery



COMMUNITY SERVICE AWARD

Corporal Shawn Tuthill
Officer Heather Pendley
Telecommunicator Nela Conner



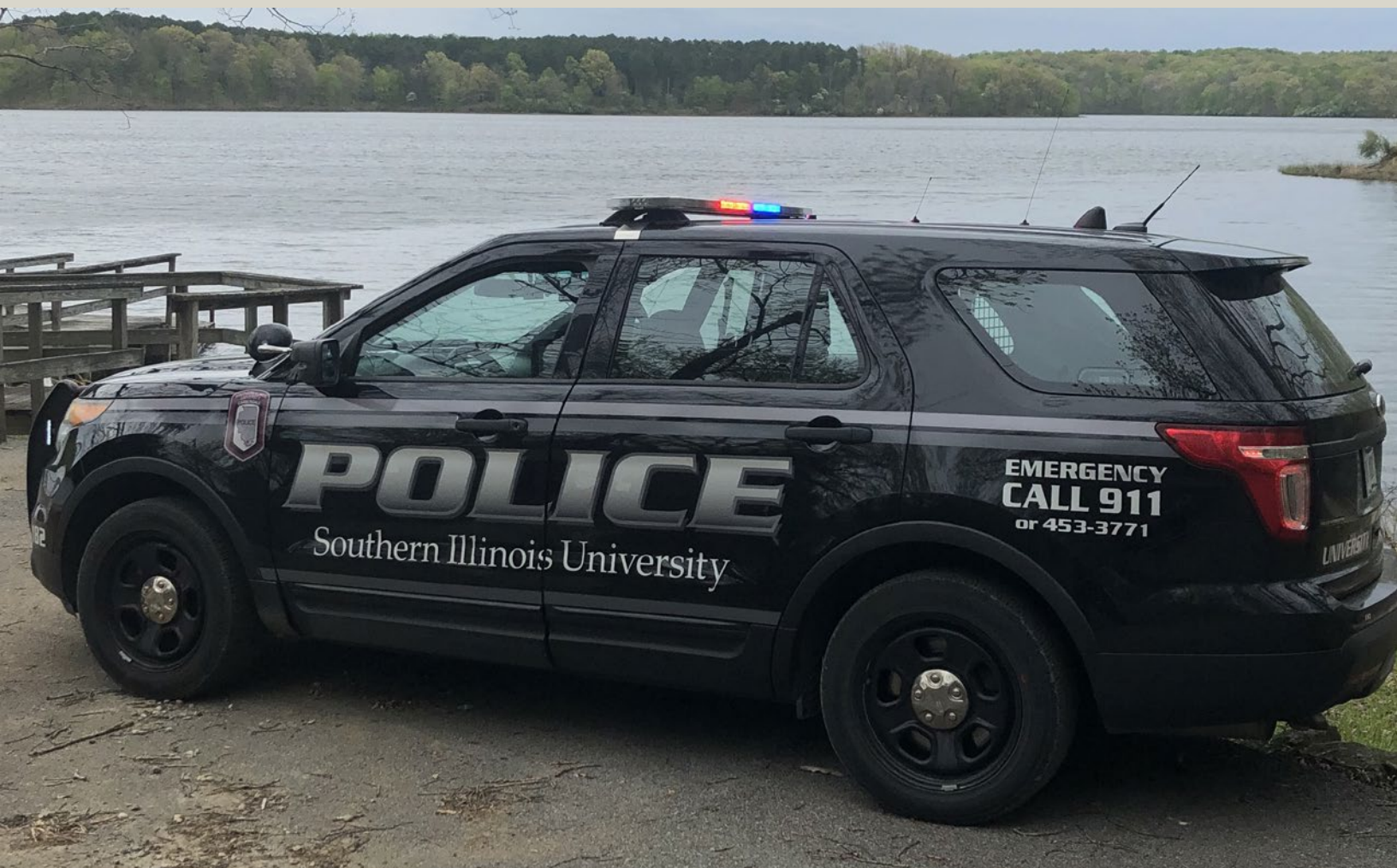
EXCELLENT SERVICE COMMENDATION

Officer Lee Nguyen
Officer Dennis Followell
Officer Bryan Pyatt
Officer Michael Allen
Officer Destiny Dintelman
Officer Marzine Rafe
Corporal Adam Fager



GOALS FOR 2020

-
- GOAL 1: *To improve community-policing efforts by utilizing social media platforms, implementing presentations, and advocating engagement with the campus community. Department personnel will participate in community events, including registered student organization events and other engagement opportunities. Sworn personnel will interact with the campus and provide educational information on police and public safety services. Assigned personnel will produce and disseminate relevant information through social media on a timely basis.*
-
- GOAL 2: *To transition to the National Incident-Based Reporting System (NIBRS) from Uniformed Crime Reporting (UCR). NIBRS provides greater specificity of offenses, collection of detailed information, greater context to specific crime problems, and better analytics within offenses. NIBRS aims to improve reliability, accuracy, accessibility, and timeliness. Several of the nation's top law enforcement organizations endorse NIBRS including the International Association of Chiefs of Police, Major Cities Association, Major County Sheriffs Association, and National Sheriffs Association.*
-
- GOAL 3: *To improve the efficiency in coordinating and tracking training. Implement employee coordinating and training tracking computer software to effectively compile in-service, specialty, and other training. Computer software provides a central network or location where employees and supervisors can collectively track and network on the progress of training. Have designated personnel responsible for training to have access and control to keep training up to date.*
-
- GOAL 4: *To foster employee engagement and enhance internal communications. Incorporate strategies to improve the team atmosphere. Encourage collaboration and track group tasks, providing feedback routinely.*
-
- GOAL 5: *To evaluate strategic planning efforts. The strategic plan will be evaluated on a quarterly basis to determine if goals are being met. Goals shall be instituted and revised as needed. Strategic goals should be positive and provide for an effective operation.*
-
- GOAL 6: *To improve the crime analysis function and to implement strategies from the data to effectively deter criminality. Crime analysis should include a look at factors that contribute or are relative to crimes. Analyses should be actionable.*
-
- GOAL 7: *To cultivate the next level of leadership. To provide instruction, example, and an environment leading toward upward mobility. Cross training, education, and mentorship should allow the next generation of leaders to accumulate experience.*





SIU SOUTHERN ILLINOIS UNIVERSITY
PUBLIC SAFETY
CARBONDALE