

The Saluki Watch Dawg

Aug./Sept. 2022

SIU Department of Public Safety

Vol. 9 Issue 6



In This Issue

PG 1: Saluki Move-In

PG 2: Bicycle Lock Program / Registration

PG 3: S.A.F.E. at SIU / Incident or Crime Report

PG 4: CAPS

Saluki Move-In

Thursday, August 18th, 2022

Residence Hall Move-In, 9:00 a.m.–4:30 p.m.

Check-In/Move-In for new freshman and transfer students. See University Housing website for more information about move-in: <https://housing.siu.edu/move-in/res-halls-moving-in/> Sponsored by University Housing and Residence Education.

Friday, August 19th, 2022

Residence Hall Move-In for Returning Students, 9:00 a.m.—4:30 p.m.

Move-in for returning students begins today! Be sure to visit University Housing for all the details. Sponsored by University Housing and Residence Education.

SIU Campus Resources

[SIU Police](#)

618-453-3771

[Parking Division](#)

618-453-5369

[Counseling Center](#)

618-453-5371

[Wellness Center](#)

618-536-4441

[Student Health Services](#)

618-453-3311

[Night Safety Transit](#)

618-453-2212

[Carbondale Resources](#)

[Carbondale Police](#)

618-457-3200

[Survivor's Empowerment Center](#)

618-529-2324

[Memorial Hospital](#)

618-549-0721

New Student Move-In Information

EAST CAMPUS: MAE SMITH, NEELY, SCHNEIDER HALL & UNIVERSITY HALL
Park and unload your vehicle where directed. Leave someone with your belongings and move your vehicle to Lot 45 (in Rinella Field) or Lot 106 (on Wall Street). **With your student picture ID in hand**, proceed to the check-in area in your residence hall to complete the check-in process and receive your key/fob. Proceed to the elevator and load your belongings. Lower floors may use stairways. NOTE: Rolling carts are available to help expedite move-in.

WEST CAMPUS: THOMPSON POINT

Go to your building and unload curbside. Leave someone with your belongings and move your car to Lot 4 (Communications Building corner lot), across from Thompson Point, or in overnight lots: Lot 23 (behind the Communications Building) or Lot 59 (past Greek Row). **With your student ID in hand**, go to the area office to complete your check-in process and receive your key/fob.

RETURNING STUDENTS' MOVE-IN INFO

You may move in beginning at 9 a.m. on your assigned day. **With your student ID in hand**, check in at your assigned hall

[Residence Halls Move In](#) | [Apartments Move In](#) | [Move In Volunteer](#)

[Crime Prevention & Programs](#)[Report Suspicious Activity](#)[Campus Emergency](#)[Response Guide](#)[Night Safety Transit](#)[Campus Map](#)[Parking Map](#)[Daily Crime Log](#)[FOIA Request Form](#)[SIU Campus Crime Report](#)

Bicycle Lock Program & Registration

The SIU Department of Public Safety has partnered with Vice Chancellor for Diversity, Equity, and Inclusion Dr. Paul Frazier, the Undergraduate Student Government (USG), and the Graduate and Professional Student Council (GPSC) to help deter bike thefts on campus. SIU Parking Division will be giving away a free U lock to each SIU student when registering a bicycle with the University.

Over 90% of all bikes stolen on campus last year were left unsecured or locked up with an inferior cable lock. Using a high-quality U lock is an easy way to protect your bike from being stolen. All current and future registered bicycles are eligible. Lock quantities are limited and will be distributed on a first come first serve basis.

Stop by the SIU Parking Division at Trueblood Hall 1175 S. Washington, to register your bicycle and get a FREE U lock.

All bicycles parked on campus are required to be registered, either by SIU or by the City of Carbondale. Registering your bicycle aids the Department of Public Safety and local law enforcement agencies with the recovery of your bicycle in the event of loss or theft.

SIU Parking Division registers bicycles for students and staff for free. You must bring your bicycle along with your student/staff ID to our office to complete the registration process. You can complete a registration form at Parking Division when you bring your bicycle and student/staff ID to obtain your decal.

Before coming to Parking Division, please check your bicycle for the following safety equipment. Parking Division cannot register any bicycles without the following required equipment:

- Reflectors on each pedal
- Side reflectors
- Front and rear reflectors
- From sunset to sunrise, front white lamp and rear red lamp or reflectors are required.



Once you have registered your bike [you may park it at any of the bike racks on campus.](#)

Check us out on Instagram and Twitter at [SIUC Police](#).

[Instagram @ SIUC Police](#) [twitter.com/SIUC Police](https://twitter.com/SIUC_Police)

Start Up Events

August 18th, 7-9 p.m.

Light Up the Lake
Becker Pavilion

August 19th, 6:30 p.m.

Saluki Kickoff Event
Saluki Stadium

August 20th, 7-11 p.m.

Dawgs Night Out
Student Center

August 21st, 1-3 p.m.

Chancellor's Welcome
Shryock Lawn

August 22nd, 7:30-2 p.m.

Saluki Stop Shops
Multiple Locations





Additional Resources

[Office of Equity and Compliance](#)

618-453-4807

[Dean of Students](#)

618-453-2461

[Student Rights and Responsibilities](#)

618-536-2338

[Saluki Cares](#)

618-536-2338

[Salukis on Your Side](#)

618-453-3311

[Veteran Services](#)

618-453-1335

[The Clinical Center](#)

618-453-2361

Meet The Chief



Chief Benjamin Newman



GET HELP NOW



FILE A REPORT



AVAILABLE RESOURCES



STAY SAFE ON CAMPUS



CONSENT



POLICY INFORMATION

Safety, Awareness, Facts and Education

The [S.A.F.E](#) website was created as a resource for students, faculty, staff and visitors that contains information about campus resources, crime reporting, crime prevention, and safety. The SIU Campus Crime Report, Clery and Violence Against Women Act reporting is also available on this website. Additional information is available on the university reporting structure for incidents related to sexual violence, domestic and dating violence, stalking and sexual harassment.

File an SIU Campus Incident or Crime Report

Who? Anyone may file a report, but some faculty and staff are required to do so.

What? Clery Act violations, and incidents of sexual assault (rape), domestic and dating violence and stalking to the University.

To whom? Reports go to the Clery compliance coordinator, the Office of Equity and Compliance, and the SIU confidential advisor.

Police? No. To submit a police report, call the Department of Public Safety at 618-453-3771 or visit the department located at Trueblood Hall, 1175 S. Washington St, Carbondale, IL.

Amnesty? Yes. Students reporting such incidents are covered by the University's amnesty policy.

[File an SIU Campus Incident or Crime Report.](#)

Newsletter ideas or topics

If you have a topic or idea you would like us to consider for a future newsletter please email the idea to Cpl. Carrie Keith at carries@dps.siu.edu. Questions submitted may also be featured in future newsletters. The person submitting the question will not be identified.



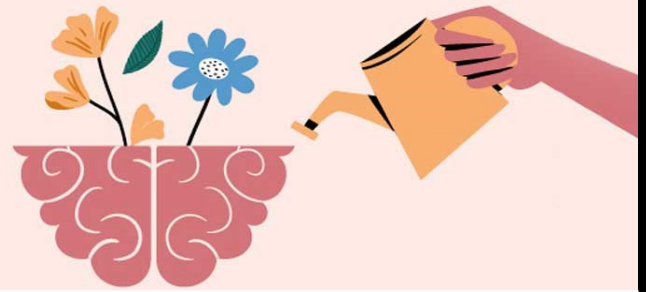
Follow Us!

You can also follow us on Twitter and Instagram at [SIUC Police](#). We provide information regarding local events, safety tips and press releases for major incidents. You can also send us your questions through private messages and tips on any recent crimes that have taken place.

[Twitter @SIUC Police](#)

[Instagram @ SIUC Police](#)

COUNSELING & PSYCHOLOGICAL SERVICES



Counseling & Psychological Services at SIU

OUR MISSION

Our mission is to provide mental health-related services to facilitate students' adjustment to college and their personal and psychological growth in becoming high functioning and socially responsible adults. Our staff works to help students resolve problems that interfere with personal, social, and academic functioning while also emphasizing prevention, development, adjustment, and wellness.

CAPS AT UNIVERSITY HOUSING

Counseling and Psychological Services (CAPS) and University Housing work together to make counseling available for students who live in University Housing. Students can call or come by the office to access support ranging from crisis services, intakes, and individual therapy. Other services provided include workshops, seminars, and group therapy.

- **How do I see a Counselor at University Housing?** Students can be self-referred or referred by University Housing staff. Counselors can be reached at (618) 453-5371.
- **Is this counseling session free?** The door fee cost is \$10.00 per visit and must be billed to your Bursar account. Funding is available for students who cannot afford the door fee. Please ask your counselor about funding support.
- **Where is CAPS at University Housing?** Offices are located in Baldwin Hall and Grinnell Hall.

What are the hours for CAPS at University Housing? Counselors are available from 12:30pm - 9:00pm, 7 days per week. Please call (618) 453-5371 to inquire about counseling services, locations, and hours.

FOR MORE INFORMATION CLICK [HERE](#)